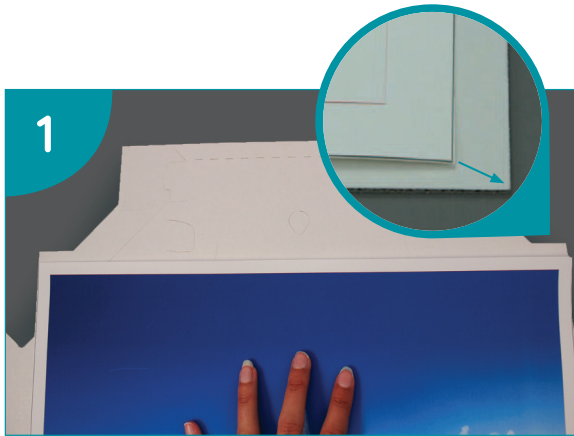


QuickPro ArtWrap™ Instructions

Adventa

How to make the perfect canvas in just **under 2 minutes!**



1 First print your design onto our pre-set templates (<https://www.adventa.com/canvas-creator>). Place the QuickPro board adhesive side down and align canvas. Square up with the corner guidance tabs.



2 Using the correct size stapler and holding the canvas in position, staple along each side, ensuring you staple close to the corners as shown.



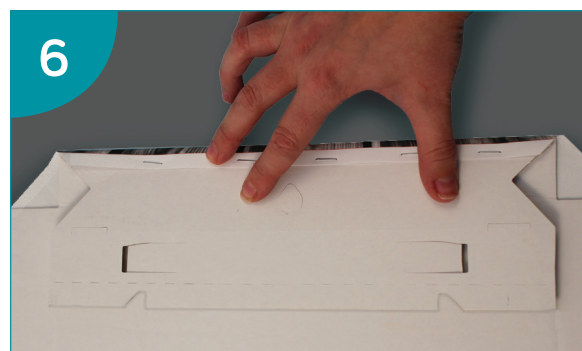
3 Turn over and detach the corner guidance tabs.



4 Cut diagonally across each corner close to the board.



5 Pre crease the folds, then remove the adhesive backing strips on the two sides.



6 Fold adhesive flaps on the crease next to the staples. Press adhesive firmly down. Repeat on the opposite side.

What you **will need:**  

Scan this code to
watch the video:

Or visit: www.adventa.com/quickpro/trainingvideo



QuickPro ArtWrap™

Instructions

Adventa



7
Lift up sides to form the canvas sides. Push the channels beyond the upright position.



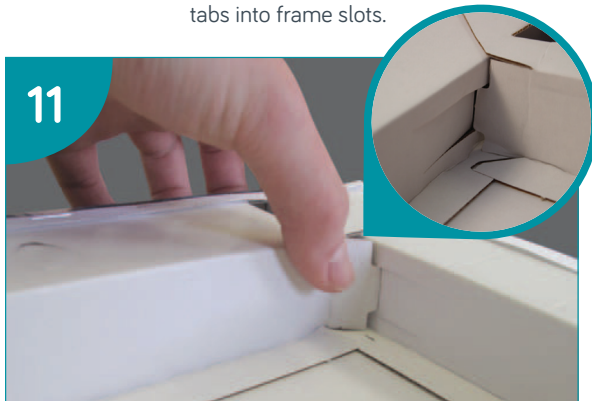
8
Lift one end up, push canvas inside corner and pinch the canvas firmly to crease.



9
Push tabs inward and carefully line-up the location tabs into frame slots.



10
Press down, hold in place and then roll inner frame edge downwards.



11
Then push the locking tabs into position.



12
Repeat on the opposite side and you're done!

Black back instructions



1
Remove adhesive backing along the edge close to the crease.



2
Line up the back with the canvas, hold in place, and press down creased edge firmly.



3
Lift the flap, and remove any remaining adhesive backing then press down firmly.