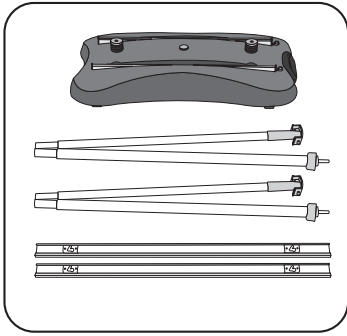
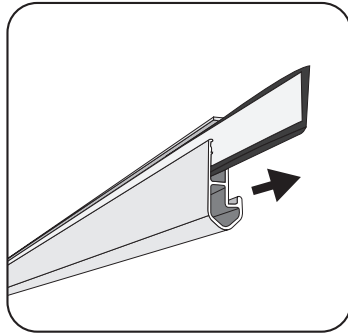


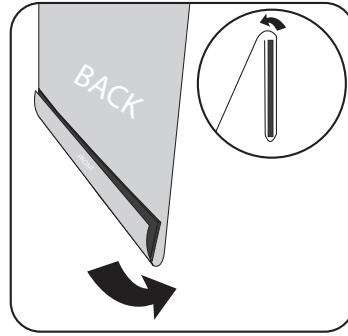
INSTALLATION STEPS



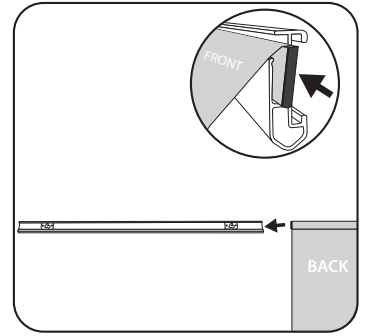
- 1** The box contains:
- A carry bag
 - Top bars
 - Support poles
 - The fillable plastic base



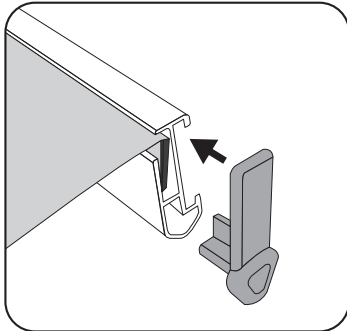
- 2** Remove the adhesive rail from the top bar.



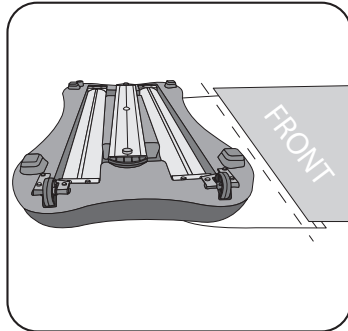
- 3** Remove the paper covering the adhesive both sides of the adhesive rail. Attach the top of the graphic as shown above.



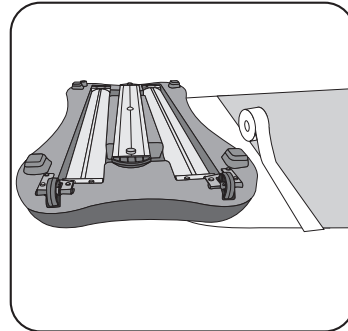
- 4** Once adhesive bar is secured to the top of the banner, insert it into the rail in the top bar.



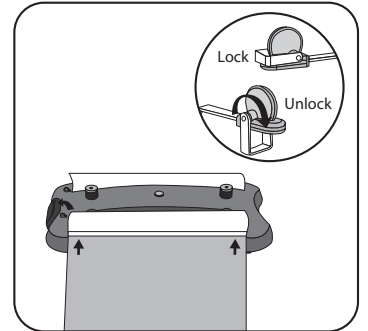
- 5** Place the end caps onto the top bar to secure the adhesive rail in place. Repeat steps 2 to 5 for additional graphic.



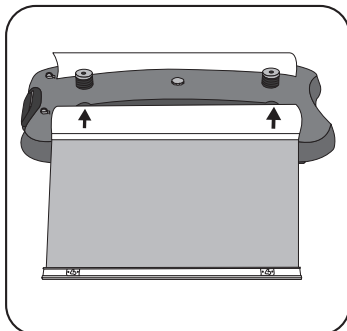
- 6** Peel the paper off the adhesive along the edge of the leader. Ensure the bottom of the banner is straight along the adhesive, and attach the banner, front facing up.



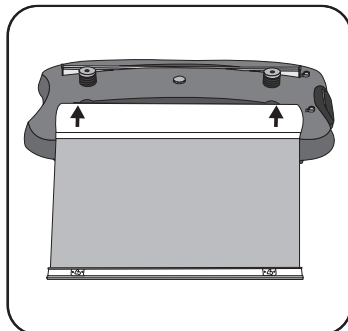
- 7** Secure the banner to the leader with additional tape on both sides.



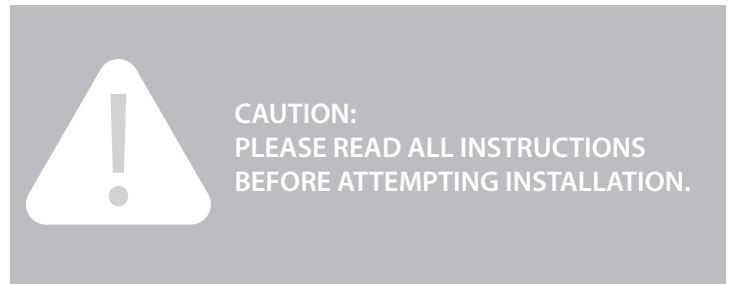
- 8** Tug on the leader gently, and grip the banner against the base. Pull the small handle on the side to release the tension.



- 9** Carefully allow the banner to retract into the base, keeping it even distance from the edge of the base on both sides.



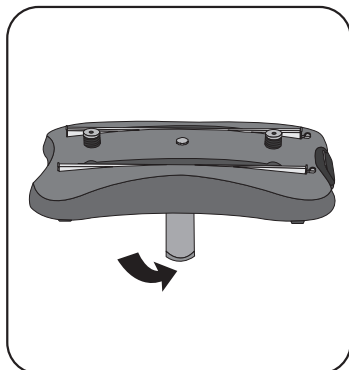
- 10** Repeat steps 6 to 9 for additional graphic.



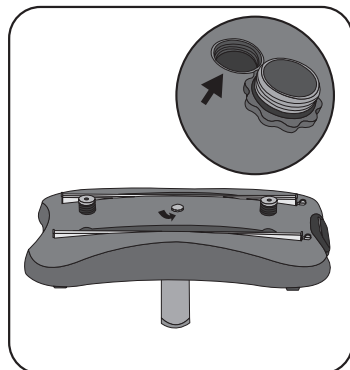
When done installation, leave lower portion of this sheet with the stand for the end user



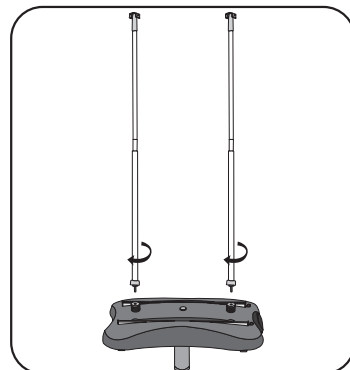
SET-UP STEPS



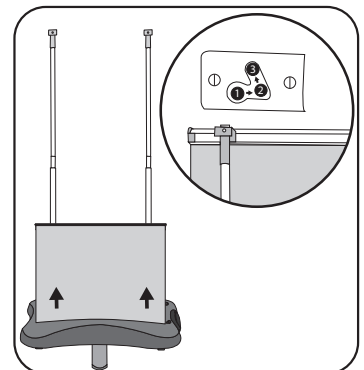
- 1** Twist out stabilizing foot on the bottom of the base.



- 2** Twist off cap found in the center of the base, and add additive of choice. For outdoor displays with hollow plastic bases, use additives or sand when using in temperatures below 0°C (32°F)



- 3** Assemble poles and twist into spring holders on the base.



- 4** Standing behind the stand hold the top bar and pull up the banner to the top of the poles. Rest the holders on the top bar as shown above. Repeat for additional graphic.

IMPORTANT: For outdoor displays with hollow plastic bases, use additives or sand when using in temperatures below 0°C (32°F)