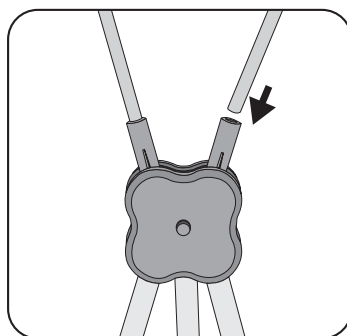
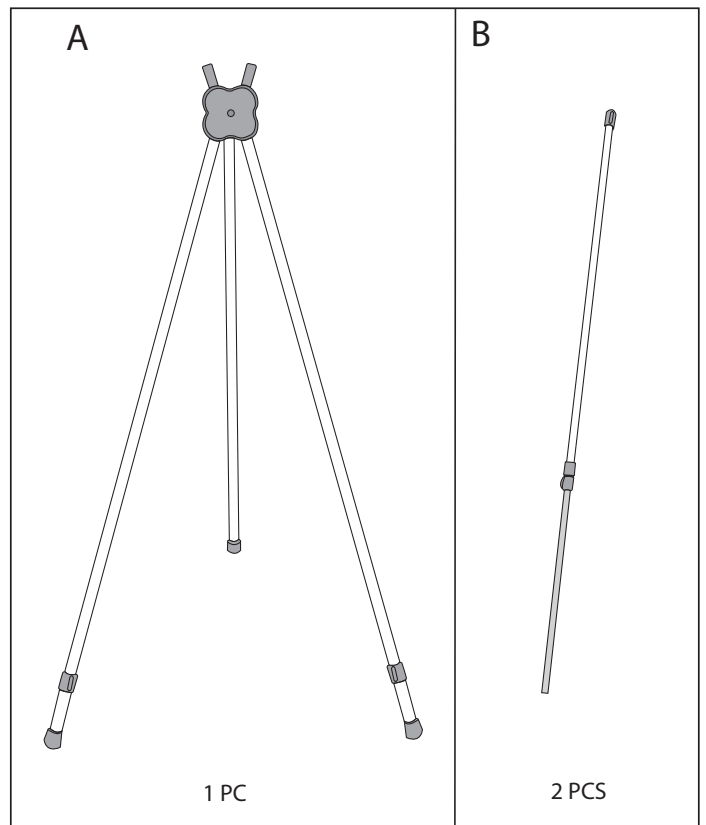
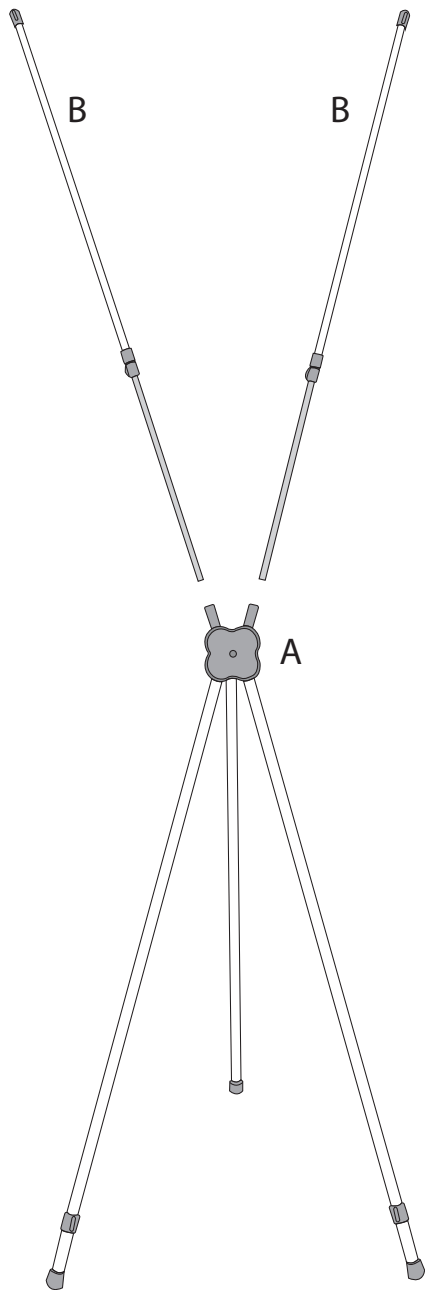
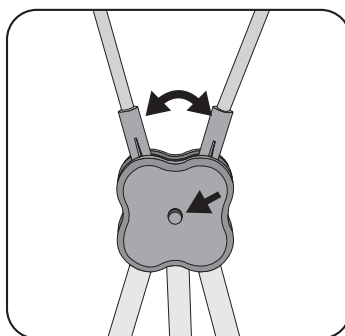


ASSEMBLY INSTRUCTIONS

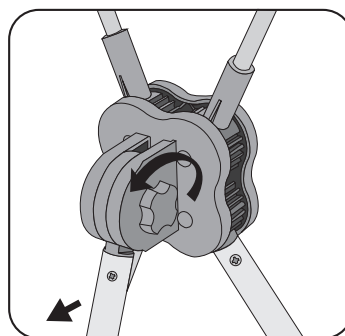
COMPONENTS:



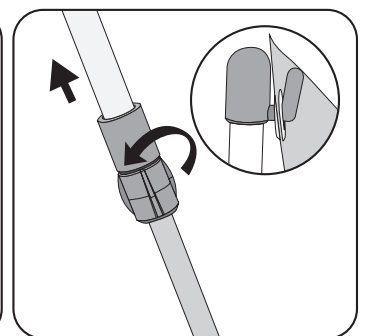
1 Insert top arms with hooks into body of display. Hooks should be facing towards front of display.



2 Press button on body and hold to release gear mechanism. Begin moving top arms with hooks away from each other. Release button.



3 Loosen knob on rear of Body to adjust back leg out and into supporting position. Once in position, tighten knob.
Note: Do not over tighten knob.



4 Hook banner on to display; top of banner first onto Top Arms; then bottom of banner on to front supporting legs.
For increased banner tension, lengthen Top Arms by loosening at connection, extending Arm, then tightening twist lock to secure in position.
Note: Ensure both arms are extended to the same length, and Do not overtighten Top Arm adjustment twist lock.