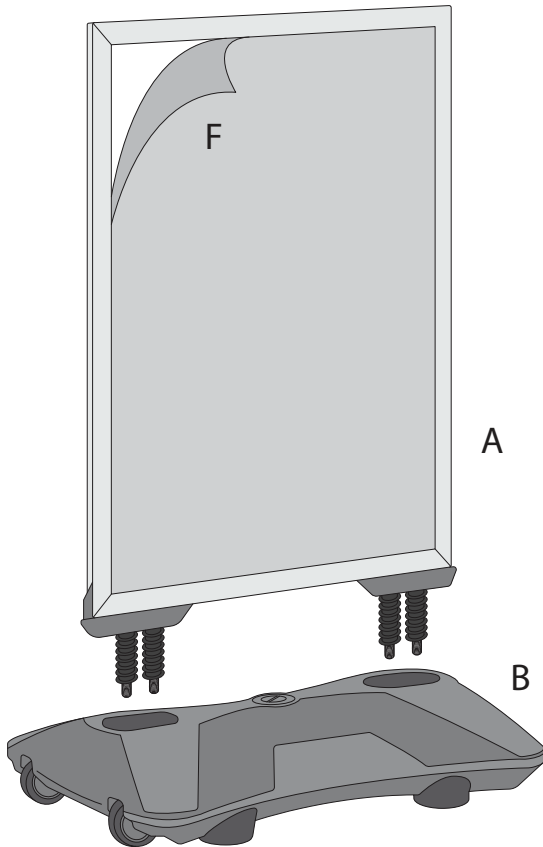
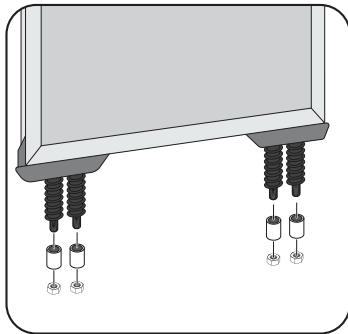


ASSEMBLY INSTRUCTIONS

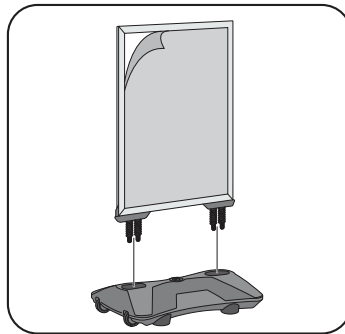
COMPONENTS:



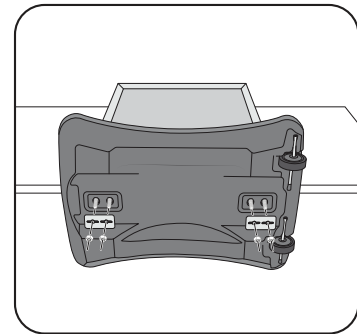
A 1 PC	C 2 PCS
B 1 PC	D 4 PCS Wrench 1 PC P 2 PCS



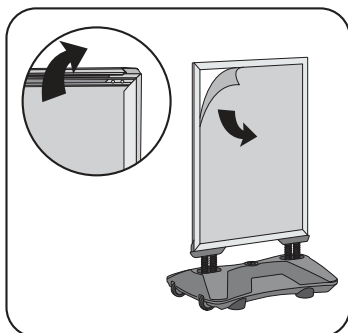
- 1** Remove nuts (D) that arrive secured to the bolts (beneath springs) and set aside for later use. Discard the four protective foam tubes.



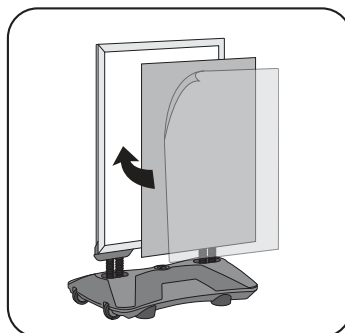
- 2** Insert the spring legs on the snap frame (A) through the holes on the top of the fillable base (B).



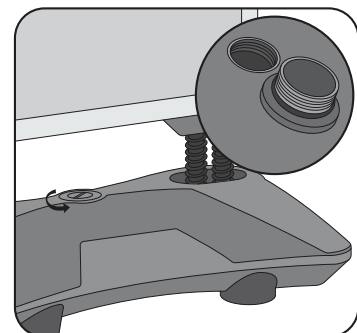
- 3** Resting the unit on its side, place a metal plate (C) over the protruding bolts and secure with two nuts (D). Tighten using included wrench. *Repeat on both sides.



- 4** Open all four edges of the snap frame. Remove the protective graphic cover (P).



- 5** Slide the graphic into the frame, followed by the protective graphic cover (P). Snap the profile closed. *Repeat on both sides.



- 6** Ballast can be added to base by removing the twist-off cap at the center of the base. Antifreeze additives or sand are recommended for use below 0°C (32°F).